

NOTES:

1. CATCH BASIN SHALL BE CONSTRUCTED IN ACCORDANCE WITH SPECIFICATIONS IN WSDOT STANDARD PLAN B-5.20-00.
2. OLYMPIC FOUNDRY GRATES SM50VG OR SM50S (OR APPROVED EQUAL), MAY BE REQUIRED WHEN CONDITIONS WARRANT, AS OTHERWISE DETERMINED BY THE CITY.

DRAWING NOT TO SCALE

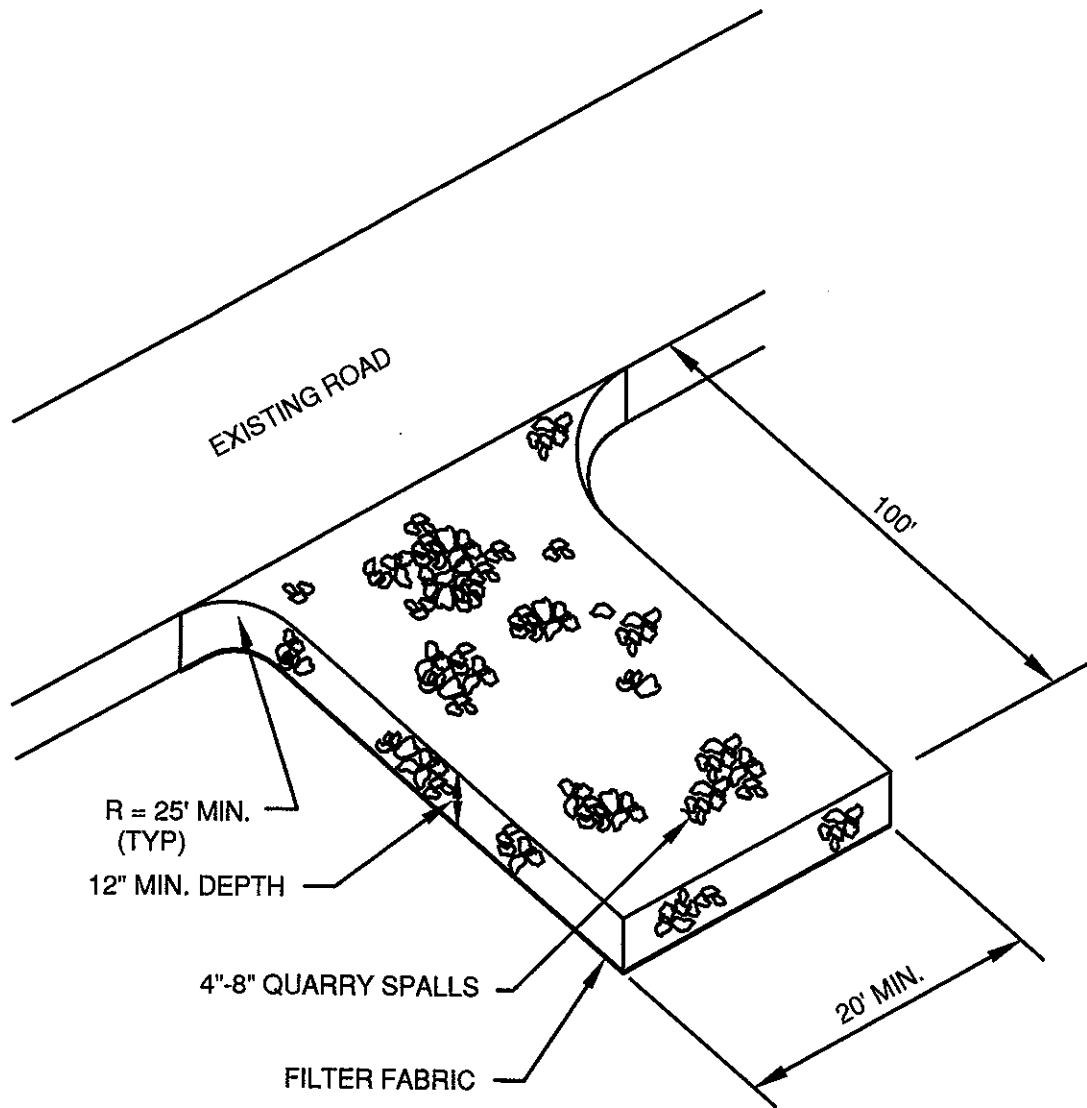
DEPARTMENT OF PUBLIC WORKS

EROSION CONTROL DETAILS
CATCH BASIN WITH SILT
TRAP TEE

REVISED
08/20/2007

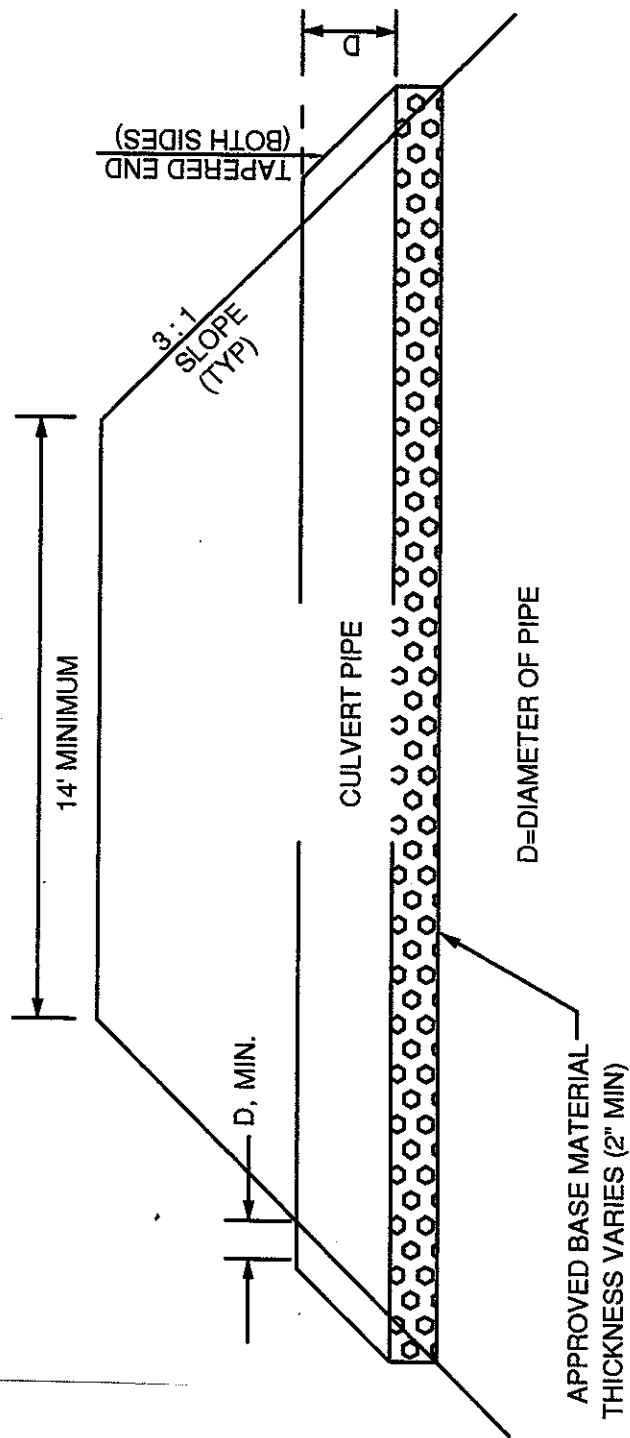
DRAWING
NO.
3-1

T:\Custom\Detail\City of Winlock\Details-ErosionControl\dwg_3-2.dwg, 8/20/2007 3:54:05 PM, D\Flye, DWG6 aPlot.pc3, Gibbs & Olson - Report A Size (8.50 x 11.00 Inches), 1:1, Gibbs & Olson, Inc.



DRAWING NOT TO SCALE

DEPARTMENT OF PUBLIC WORKS	EROSION CONTROL DETAILS STABILIZED CONSTRUCTION ENTRANCE	REVISED 08/20/2007	DRAWING NO. 3-2
----------------------------	--	-----------------------	-----------------------

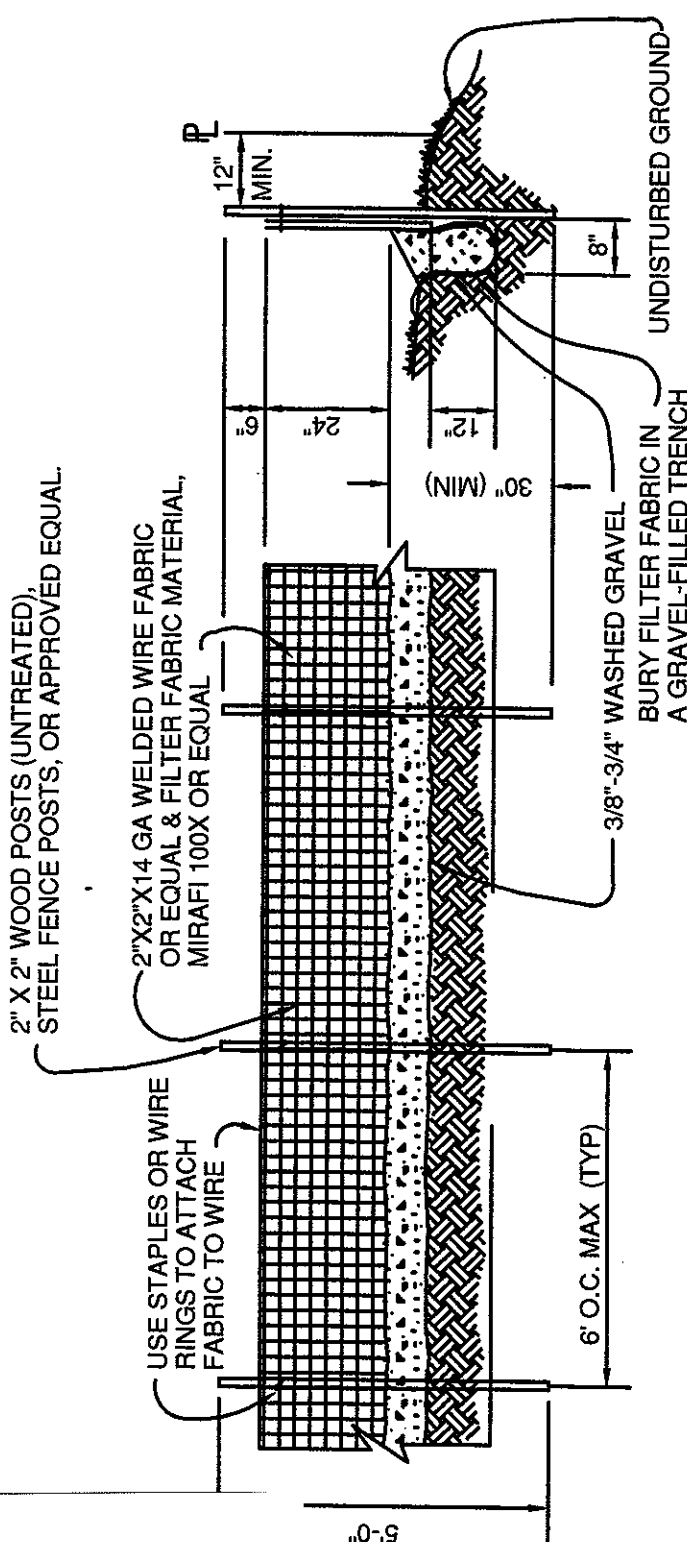


ACCEPTABLE TYPES OF CULVERT PIPES ARE: SMOOTH WALL ADS
 PVC
 CONCRETE PIPE

NOTES:

1. IF CULVERT IS BEING CONNECTED TO AN EXISTING CLOSED CONVEYANCE SYSTEM, CULVERT MATERIAL & METHOD OF CONNECTION MUST BE APPROVED BY THE PUBLIC WORKS DEPARTMENT.
2. SEE SECTION 3A.03 FOR INFORMATION REGARDING PIPE TYPE AND SIZING.
3. IF CONDITIONS WARRANT, ARMORING OF CULVERT ENDS WITH RIP RAP MAY BE REQUIRED BY CITY TO MAINTAIN SLOPE STABILITY.

<p>DEPARTMENT OF PUBLIC WORKS</p>	<p>EROSION CONTROL DETAILS DRIVEWAY CULVERT</p>	<p>REVISED 08/20/2007</p>	<p>DRAWING NO. 3-3</p>
-----------------------------------	--	--	--



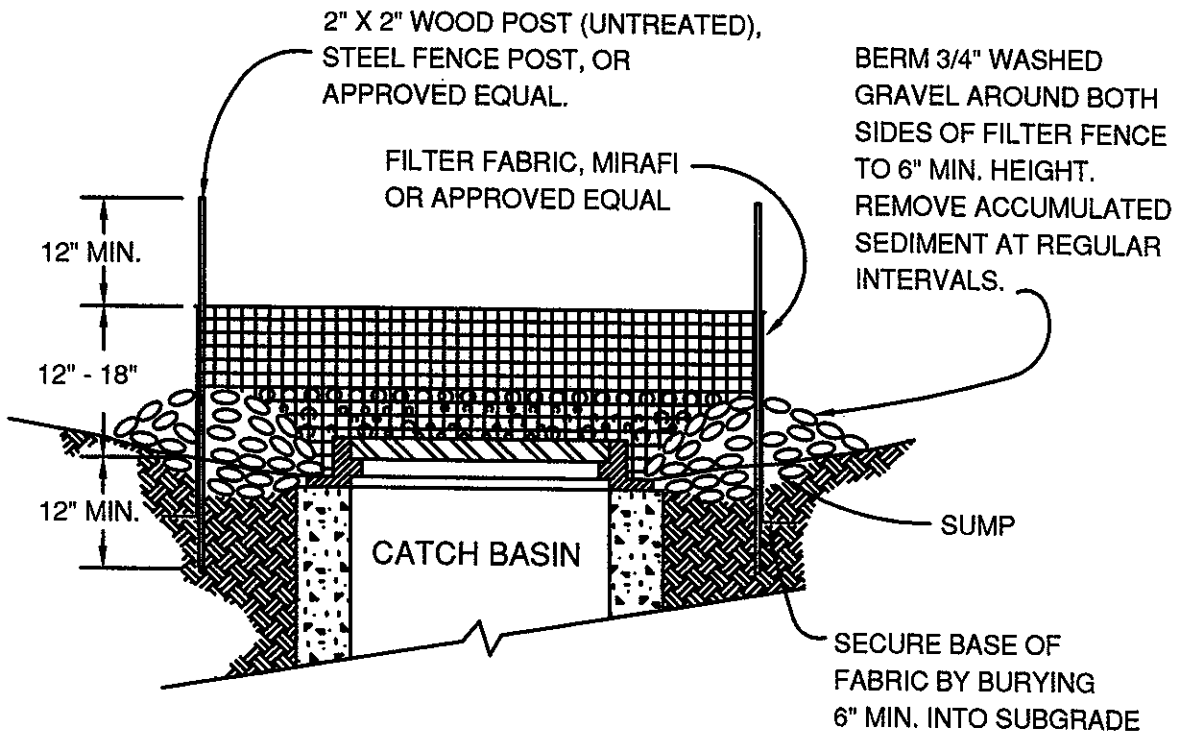
NOTES:

1. FILTER FABRIC SHALL BE PURCHASED IN A CONTINUOUS ROLL CUT TO THE LENGTH OF THE BARRIER TO AVOID USE OF JOINTS. WHEN JOINTS ARE NECESSARY, FILTER CLOTH SHALL BE SPLICED TOGETHER ONLY AT A SUPPORT POST, WITH MINIMUM 6-INCH OVERLAP, AND SECURELY FASTENED @ BOTH ENDS.
2. A WIRE MESH SUPPORT FENCE SHALL BE FASTENED SECURELY TO THE UPSLOPE SIDE OF THE POSTS USING HEAVY-DUTY WIRE STAPLES AT LEAST 1-INCH LONG, TIE WIRES, OR HOG RINGS. THE WIRE WILL EXTEND INTO THE TRENCH A MINIMUM OF 4 INCHES & SHALL NOT EXTEND MORE THAN 24 INCHES ABOVE THE ORIGINAL GROUND SURFACE.
3. WHEN EXTRA-STRENGTH FILTER FABRIC & 4-FOOT MAXIMUM POST SPACING IS USED, THE WIRE MESH FENCE MAY BE ELIMINATED. IN SUCH CASES, THE FILTER FABRIC WILL BE STAPLED OR WIRED DIRECTLY TO THE POSTS W/ ALL OTHER PROVISIONS STILL APPLYING.
4. SILT FENCE SHALL NOT BE MOVED BEFORE THE UPSLOPE AREA HAS BEEN PERMANENTLY STABILIZED.
5. SILT FENCING SHALL BE INSPECTED IMMEDIATELY AFTER EACH RAINFALL & AT LEAST DAILY DURING PROLONGED RAINFALL. ANY REQUIRED REPAIRS SHALL BE MADE IMMEDIATELY.

DRAWING NOT TO SCALE

<p>DEPARTMENT OF PUBLIC WORKS</p>	<p>EROSION CONTROL DETAILS TEMPORARY SILT FENCE</p>	<p>REVISED 08/20/2007</p>	<p>DRAWING NO. 3-4</p>
-----------------------------------	---	-------------------------------	-----------------------------------

T:\Custom\Details\City of Winlock\Details-ErosionControl.dwg, 3-5-11.rvt, 8/20/2007 3:54:07 PM, DFrye, DWG6 aPlot.pc3, Gibbs & Olson - Report A Size (8.50 x 11.00 inches), 1:1, Gibbs & Olson, Inc.



DRAWING NOT TO SCALE

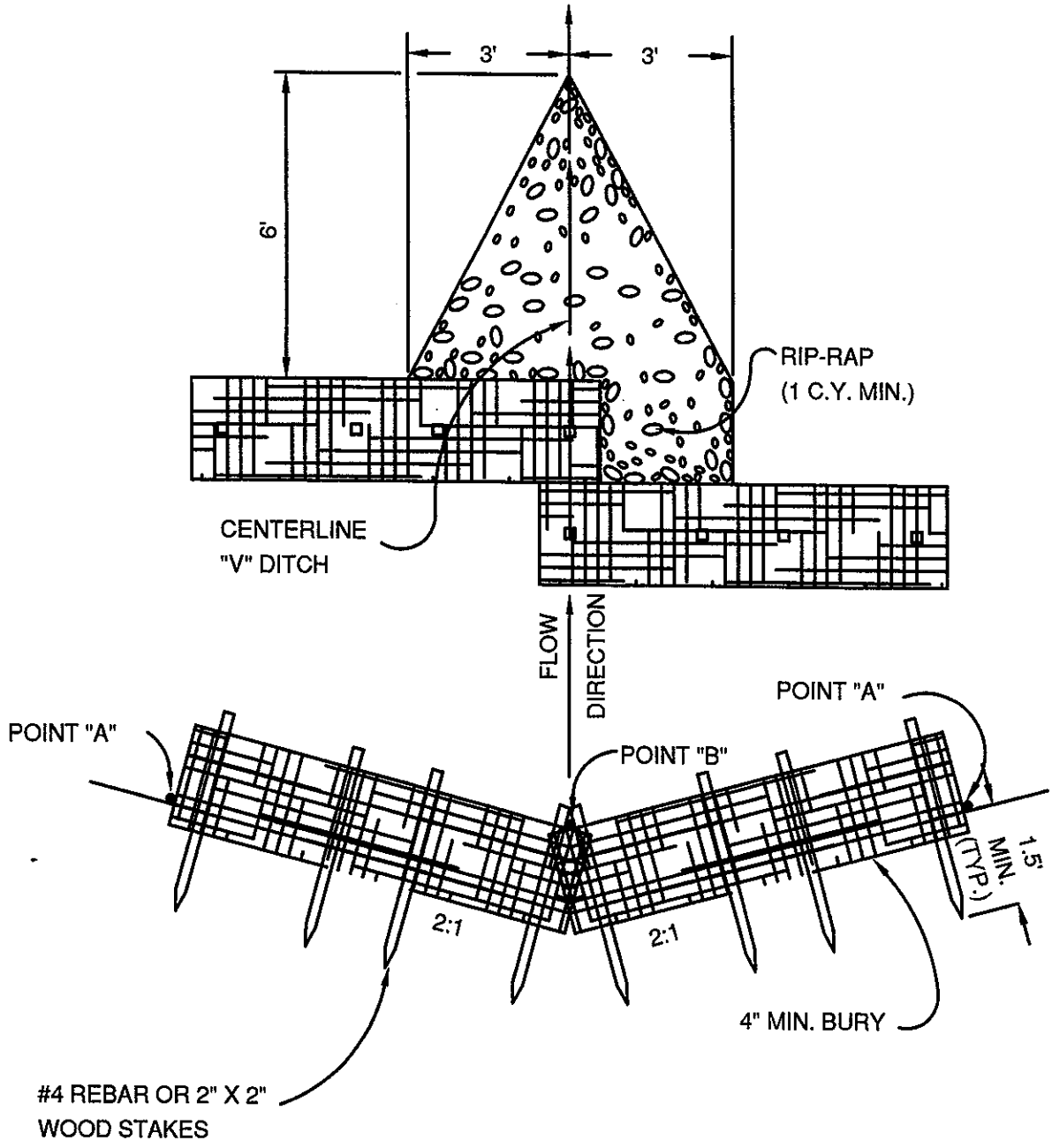
DEPARTMENT OF PUBLIC WORKS

EROSION CONTROL DETAILS
FILTER FABRIC CATCH
BASIN PROTECTION

REVISED
08/20/2007

DRAWING
NO.
3-5

T:\Custom\Details\City of Winlock\Details-ErosionControl.dwg, 3-6-dam, 8/20/2007 3:54:07 PM, DF7ys, DIMF6 aPlot.pc3, Gibbs & Olson - Report A Size (8.50 x 11.00 inches), 1:1, Gibbs & Olson, Inc.

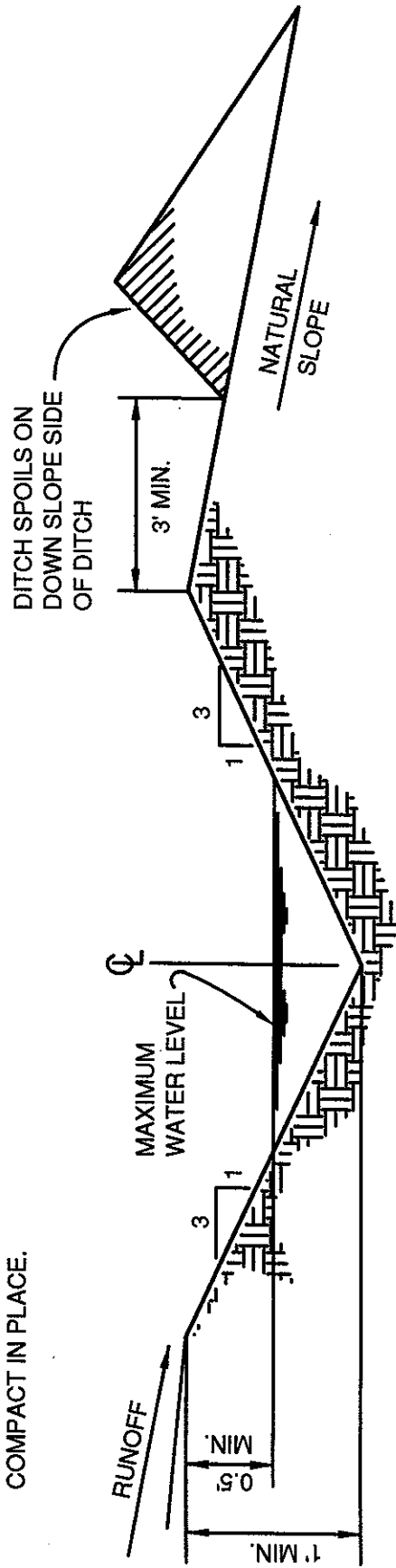


NOTE: POINTS "A"
MUST BE HIGHER
THAN POINT "B"

DRAWING NOT TO SCALE

DEPARTMENT OF PUBLIC WORKS	EROSION CONTROL DETAILS	REVISED	DRAWING
	TEMPORARY STRAWBALE	08/20/2007	NO.
	CHECK DAM		3-6

E-V-DITCH EXCAVATION
SPOILS ON DOWNHILL SLOPE,
COMPACT IN PLACE.



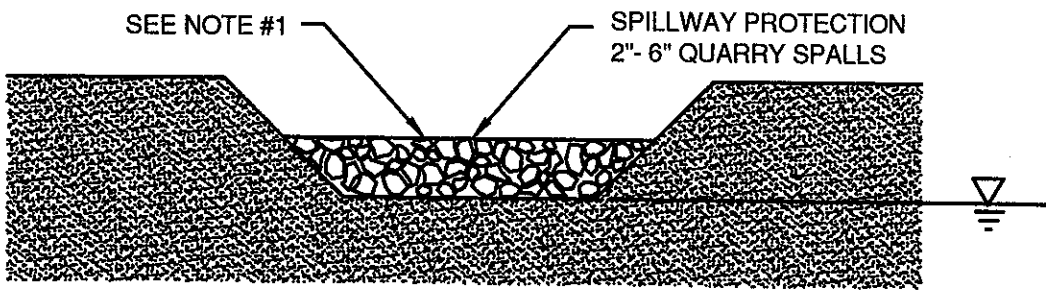
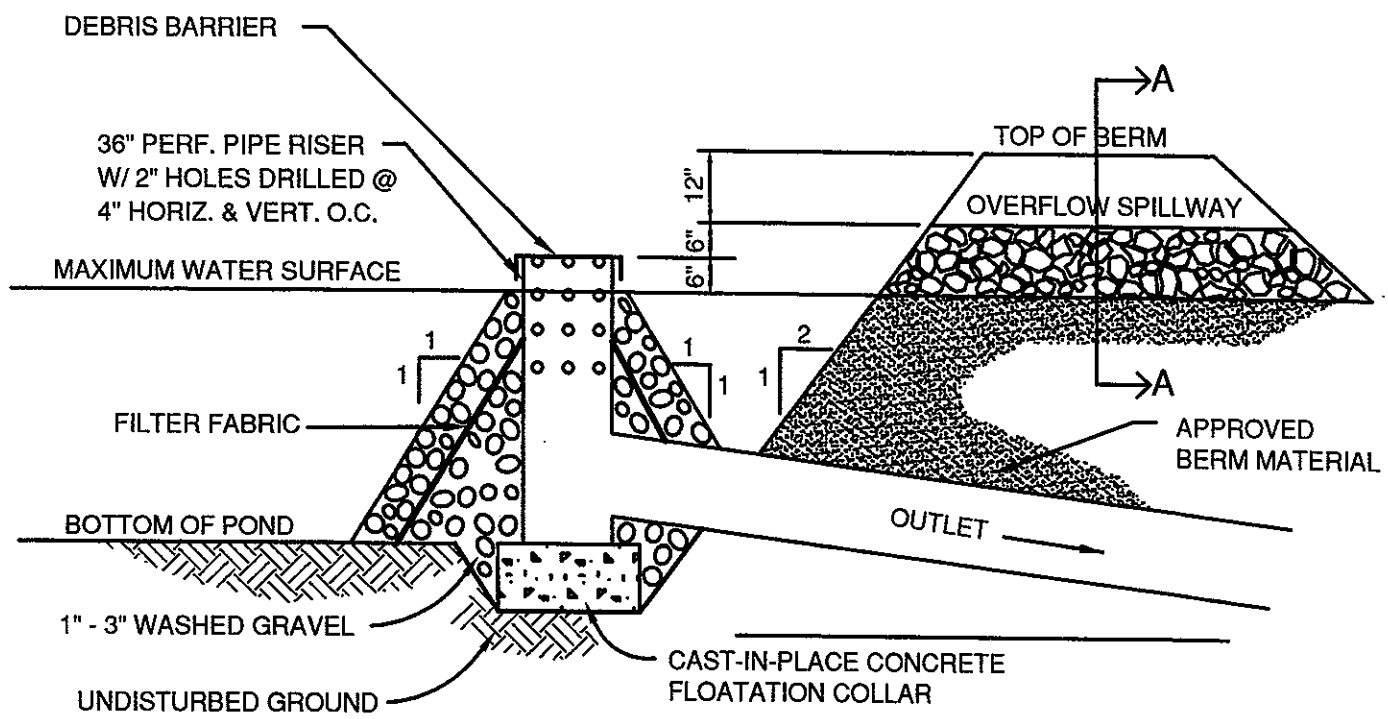
DRAWING NOT TO SCALE

DEPARTMENT OF PUBLIC WORKS

EROSION CONTROL DETAILS
TEMPORARY "V" DITCH

REVISED
08/20/2007

DRAWING
NO.
3-7



SECTION A-A

NOTES:

1. POND, OUTLET, & SPILLWAY DIMENSIONS TO BE DESIGNED BY AN ENGINEER LICENSED IN THE STATE OF WASHINGTON.
2. ALL DIMENSIONS SHOWN ON DETAIL ARE MINIMUMS.
3. OUTLET SIDE OF BERM TO BE ARMORED WITH QUARRY SPALLS FOR WIDTH OF SPILLWAY.

DRAWING NOT TO SCALE

<p>DEPARTMENT OF PUBLIC WORKS</p>	<p>EROSION CONTROL DETAILS GRAVEL CONE WITH RISER</p>	<p>REVISED 08/20/2007</p>	<p>DRAWING NO. 3-8</p>
-----------------------------------	---	-------------------------------	----------------------------

T:\CustomDetails\City of Winlock\Details-ErosionControl.dwg, 3-8-cone, 8/20/2007 3:54:09 PM, DFrye, DW/F6 ePlot.pc3, Gibbs & Olson - Report A Size (8.50 x 11.00 Inches), 1:1, Gibbs & Olson, Inc.